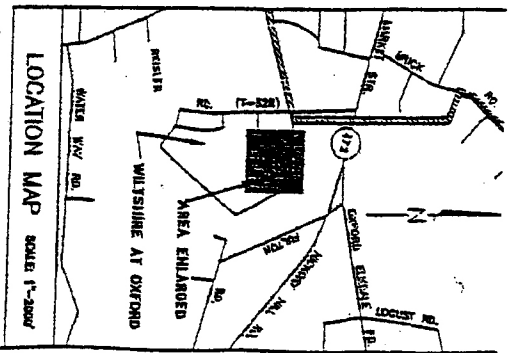
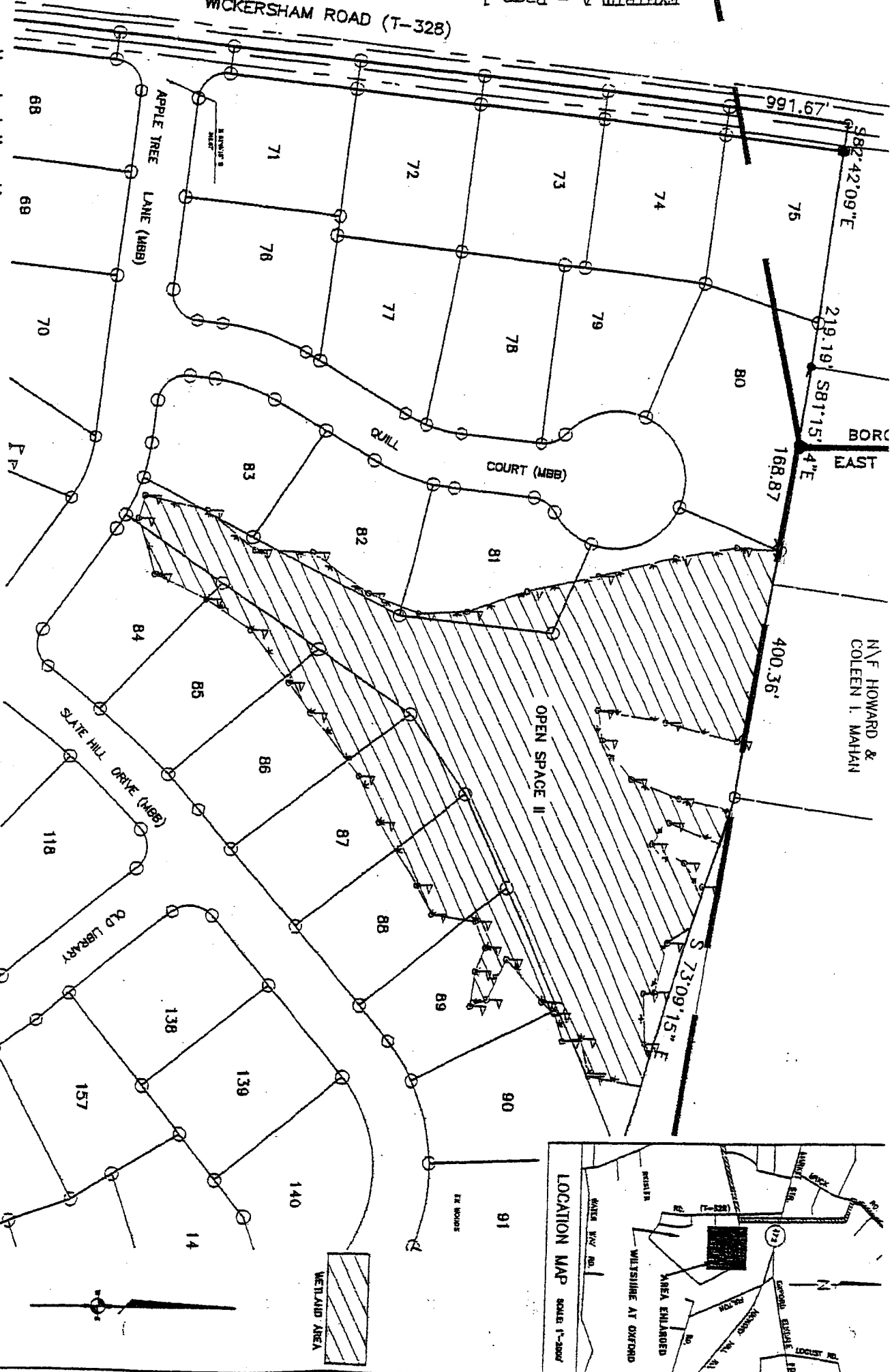


WICKERSHAM ROAD (T-328)



The wetland delineation was performed by Soil Services Co, Inc., P.O. Box 143 Penns Park, PA 18943 (215-357-6533) on October 20, 1995. Field location of wetland flag was performed by N.M. Lake & Associates, Inc.

LAKE ROEDER HILLARD & BEERS
 Civil Engineering • Land Surveying • Landscape Architecture
 150 Lindeber Road • Oxford, PA 19350
 (610) 831-2200 • (610) 832-2272 • Fax: (610) 832-4002
 Land Plan # 9 • Municipal Consulting

WETLAND AREA
NORTHEAST SIDE OF WICKERSHAM RD
 EAST NOTTINGHAM TOWNSHIP — CHESTER COUNTY, PA

WETLAND BOUNDARY DESCRIPTION

Project Manager: T. HILLARD, P.L.S.	Drawn By: GMA
Project Surveyor: T. HILLARD, P.L.S.	Checked By:
Project Engineer:	Scale: 1" = 120'

GRAPHIC SCALE
 0 60 120

DATE _____ **REVISION** _____

Project No.: 404202
 Date: JUNE 1, 1999